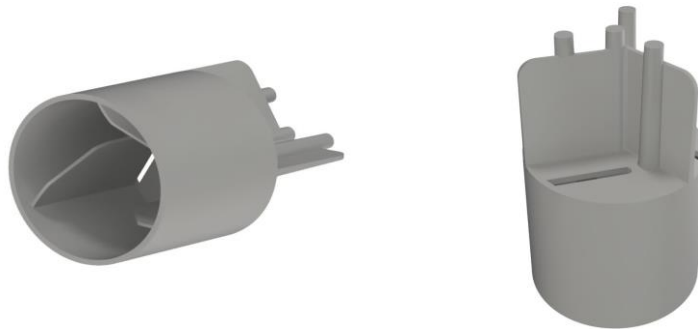


Product Specification – Pre-Cast End Cap



Pre-Cast End Cap

Product Description and Use

The Pre-Cast End Cap is primarily used to ensure concrete cover to rebar in a Pre-Cast Pile cage.

Manufactured in Australia under AS/NZS ISO 9001 guidelines the latest Pre-Cast End Cap has been designed to improve load carrying ability whilst still be an economical and simple-to-use product.

Features

- Provides Concrete Cover of 30mm
- Suit Rebar 16 to 32mm Diameter
- Manufactured from Recycled or Virgin materials as required
- Available in Carbon Fibre Reinforced Polymer (CFRP)
- Simple Push-Fit installation
- AS/NZS 2425:2015 compliant
- Manufactured in Australia under AS/NZS 9001 guidelines

Material

Pre-Cast End Caps are Injection Moulded in Australia using Black 100% Recycled or Virgin Polypropylene as required. Alternatively, the Pre-Cast Pile Chairs can be manufactured using our Carbon Fibre Reinforced Polymer.

Co-Packers Carbon Fibre Reinforced Polymer (CFRP) was initially designed to meet the requirements Qld Transport's MRTS63. The Polymer blend is Polyolefin based with Carbon additives to provide improve Chloride Permeability and Flame Resistance results. A CFRP Pile Cage Spacer was tested and achieved a Rapid Chloride Penetration Test score of 465 coulombs using a standard cure 58 day sample.

CFRP Pre-Cast End Cap features

- Expands to bond and seal inside concrete
- Flame resistant
- Insulating and self-repairing
- Suitable compression strength for use with concrete (44Mpa)
- Chloride Permeability 465 Coulombs

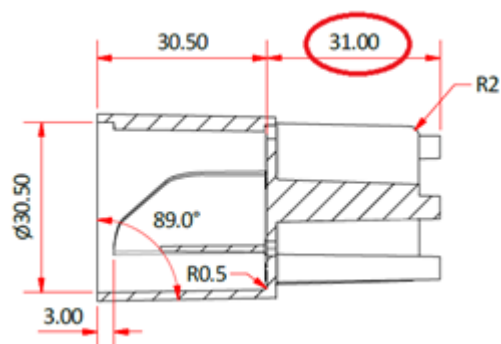
Product Codes

Product Name	Product Code
Pre-Cast End Cap to suit 16-24mm Rebar	EC16/24
Pre-Cast End Cap to suit 24-32mm Rebar	EC24/32
Pre-Cast End Cap in CFRP to suit 16-24mm Rebar	EC16/24 CBN
Pre-Cast End Cap in CFRP to suit 24-32mm Rebar	EC24/32 CBN

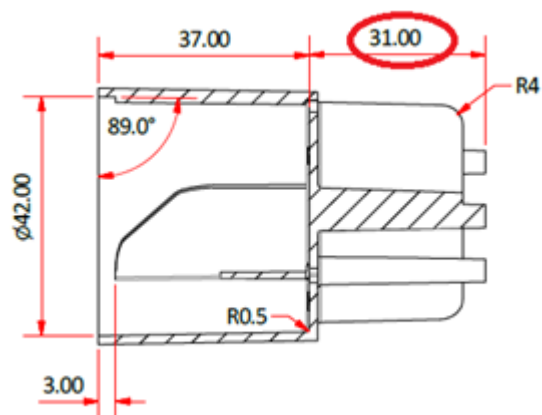
*** refer to the latest Price list for Bag / Pallet Quantities*

Identifying Product Type

Every moulding is engraved with rebar size and cover.



Suits 16-24mm Diameter Rebar



Suits 24-32mm Diameter Rebar

Installation Example

